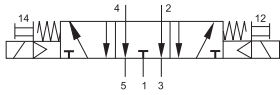


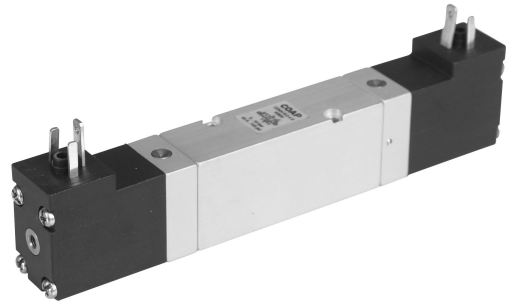
Solenoid Operated Valves
5/3-way valves, smart valves, exhaust open, base mounted

Double Solenoid Valve,
With manual override



Function:

When the coil is energized, the valve shifts its normal position & remains shifted until the coil is de-energized.



Technical Data:

Type	CDMV-5/3-4.0-E
Art. no.	63936
Connection	Ø 4mm
Valve function	5/3 way
Design	Piston spool
Type of mounting	Via through-holes
Normal dia (mm)	4
Std. nominal flow rate (l/min)	450
Operating medium	Filtered compressed air, lubricated or unlubricated
Operating pressure range	3...10 bar
Temperature range	-10...+60 °C
Operating voltage	24 V DC; 24, 230 (50...60 Hz) VAC
Power consumption	DC voltage 1,8 W; AC voltage 3,6 VA
Protection class	IP 65
Materials	Body: Wrought aluminium alloy, anodised; Seals: Nitrile rubber
Weight (g)	140

Dimensions (mm):

