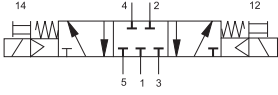


Solenoid Operated Valves

5/3-way valves, smart valves, centered closed, in-line mounted

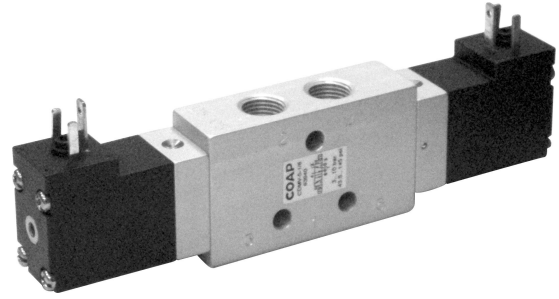
COAP

Double Solenoid Valve, With manual override



Function:

When the coil is energized individually, internal pilot pressure actuates the spool of the valve, until the coil is de-energized.



Technical Data:

Type	CDMV-5/3-M5	CDMV-5/3-1/8
Art. no.	63931	63941
Connection	M5	G1/8
Valve function	5/3 way	
Design	Piston spool	
Type of mounting	Via through-holes	
Normal dia (mm)	3.5	4.5
Std. nominal flow rate (l/min)	280	450
Operating medium	Filtered compressed air, lubricated or unlubricated	
Operating pressure range	3...10 bar	
Temperature range	-10...+60 °C	
Operating voltage	24 V DC; 24, 230 (50...60 Hz) VAC	
Power consumption	DC voltage 1.8 W; AC voltage 3.6 VA	
Protection class	IP 65	
Materials	Body: Wrought aluminium alloy, anodised; Seals: Nitrile rubber	
Weight (g)	130	150

Dimensions (mm):

