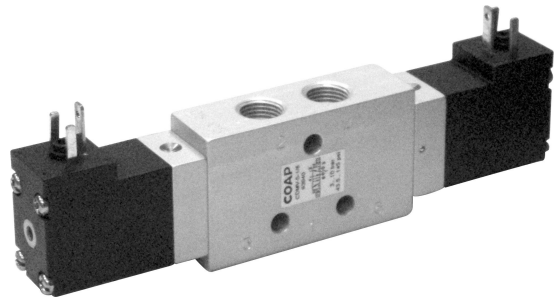
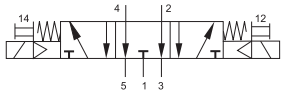


Solenoid Operated Valves
5/3-way valves, smart valves, exhaust open, in-line mounted



Double Solenoid Valve,
With manual override



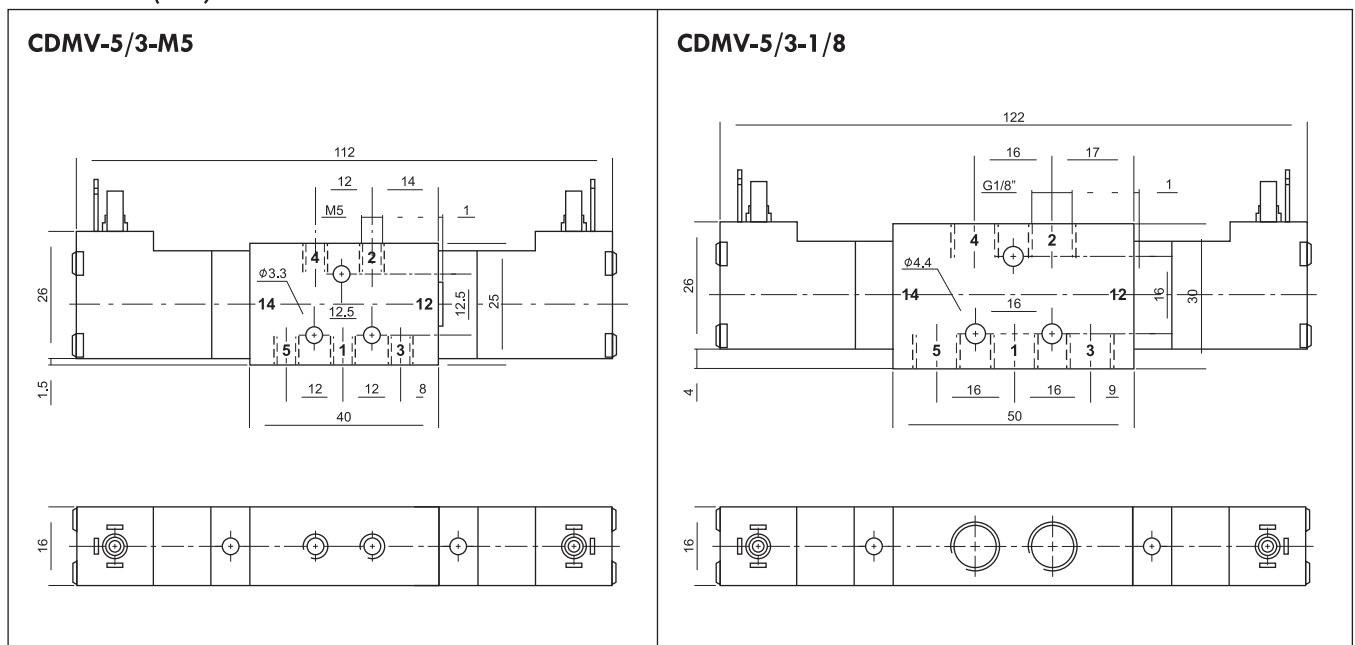
Function:

When the coil is energized, the valve shifts its normal position & remains shifted until the coil is de-energized.

Technical Data:

Type	CDMV-5/3-M5-E	CDMV-5/3-1/8-E
Art. no.	63932	63942
Connection	M5	G1/8
Valve function	5/3 way	
Design	Piston spool	
Type of mounting	Via through-holes	
Norminal dia (mm)	3,5	4,5
Std. nominal flow rate (l/min)	280	450
Operating medium	Filtered compressed air, lubricated or unlubricated	
Operating pressure range	3...10 bar	
Temperature range	-10...+60 °C	
Operating voltage	24 V DC; 24, 230 (50...60 Hz) VAC	
Power consumption	DC voltage 1,8 W; AC voltage 3,6 VA	
Protection class	IP 65	
Materials	Body: Wrought aluminium alloy, anodised; Seals: Nitrile rubber	
Weight (g)	130	150

Dimensions (mm):



Subject to change