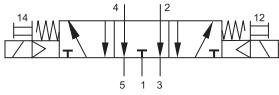


Solenoid Operated Valves
5/3-way valves, standard valves, exhaust open



Double Solenoid Valve,
With manual override



Function:

When the coil is energized, the valve shifts its normal position & remains shifted until the coil is de-energized.

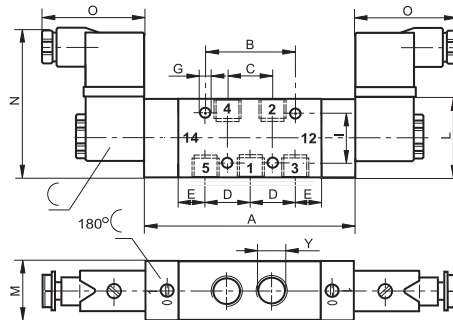
Technical Data:



Type	PDMV-5/3-1/8-E	PDMV-5/3-1/4-E	PDMV-5/3-3/8-E	PDMV-5/3-1/2-E
Art. no.	63971	63990	639109	639128
Connection	G1/8	G1/4	G3/8	G1/2
Valve function	5/3 way			
Design	Piston spool			
Type of mounting	Via through-holes			
Normal dia (mm)	5	8	10	12
Std. nominal flow rate (l/min)	650	1450	2250	3000
Operating medium	Filtered compressed air, lubricated or unlubricated			
Operating pressure range	3...10 bar	3...10 bar	1,5...10 bar	1...10 bar
Temperature range	-10...+60 °C			
Operating voltage	12, 24, 48, V DC; 24,110, 230 (50...60 Hz) VAC			
Power consumption	DC voltage 3 W; AC voltage 5 VA			
Protection class	IP 65			
Materials	Body: Wrought aluminium alloy, anodised; Seals: Nitrile rubber			
Weight (g)	340	650	680	870

Note: For magnetic coils see sheet 4.6.1

Dimensions (mm):



Connection (Y)	A	B	C	D	E	G	I	L	M	N	O
G1/8	92	36	18	18	12	4,5	25	36	22	65	48
G1/4	112	44	22	22	18	5,5	36	50	30	72	48
G3/8	126	56	28	28	19	6,6	36	50	30	72	48
G1/2	146	64	32	32	25	6,6	40	60	30	78	48