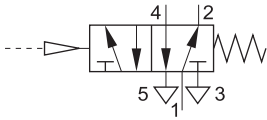


**Single Pilot Valve,**  
Spring return, without sub-base



**Function:**

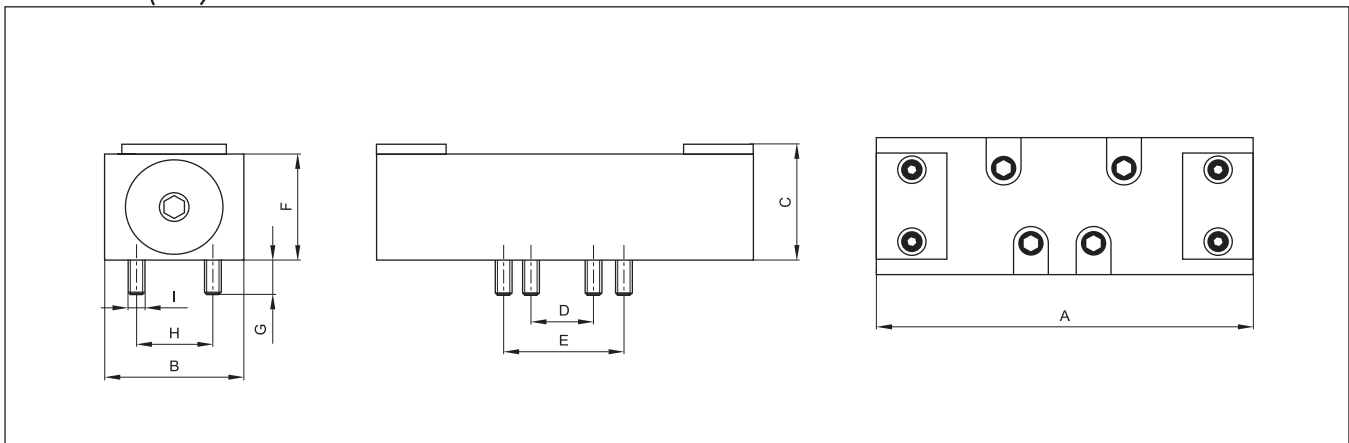
Pressure on the pilot port actuates the spool of the valve till the removal of pilot pressure.

**Technical Data:**

Type	PPVI-5/2-S-1	PPVI-5/2-S-2
Art. No.	52654	52662
ISO size	1	2
Connection	1/4" (Sub-base)	3/8" (Sub-base)
Nominal diameter (mm)	5	8
Flow rate at 6 bar (NI/min)	840	1560
Fluid	Filtered air, lubricated or non lubricated	
Design	Balanced spool	
Mounting	On sub-bases	
Operating pressure	1...10 bar	
Pilot pressure	2 bar	
Temperature range	-10...+70 °C	
Body	Die casted zamak	
Seals	NBR	

**Note:** For sub-bases see sheet 4.5.9.

**Dimensions (mm):**



Size	A	B	C	D	E	F	G	H	I
1	108	40	34	18	36	31	9	28	M5
2	133	48	39	24	48	36	9.5	38	M6

Subject to change