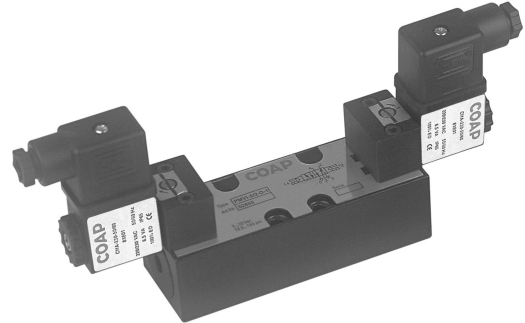
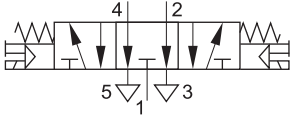


ISO 5599/1 Valves

5/3-way valves, exhaust open, double solenoid valves



Double Solenoid Valve, With manual override, spring centered, Without sub-base



Function:

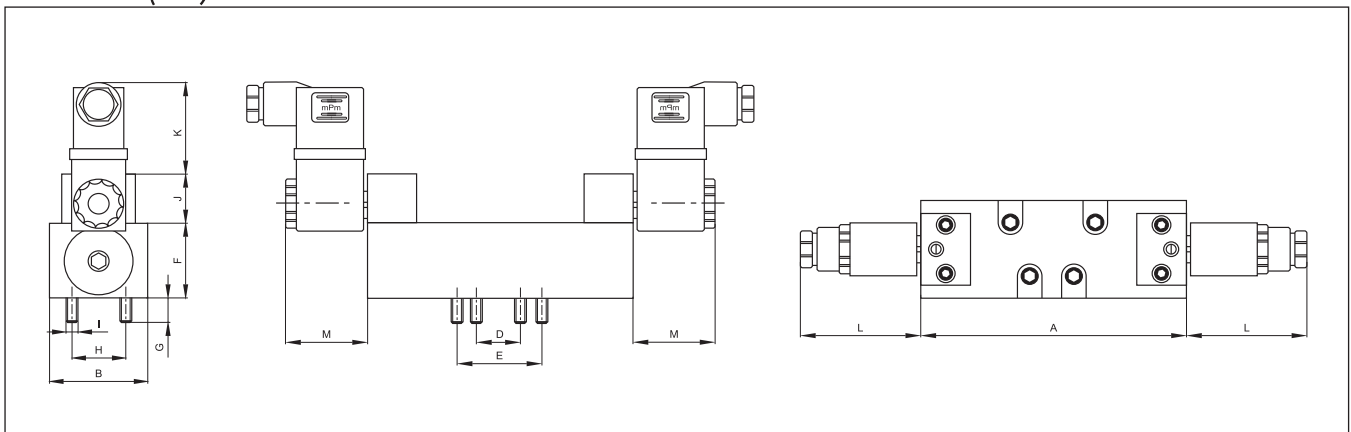
When the coils are energized individually, internal pilot pressure actuates the spool of the valve until the coil is de-energized.

Technical Data:

Type	PMVI-5/3E-D-1	PMVI-5/3E-D-2
Art. No.	52659	52667
ISO size	1	2
Connection	1/4" (Sub-base)	3/8" (Sub-base)
Nominal diameter (mm)	5	8
Flow rate at 6 bar (NI/min)	840	1560
Fluid	Filtered air, lubricated or non lubricated	
Design	Balanced spool	
Mounting	On sub-bases	
Operating pressure	1...10 bar	
Min. pilot pressure	2 bar	
Temperature range	-10...+70 °C	
Body, Seals	Die casted zamak, NBR	
Operating voltage	12, 24, 48, 110 V DC; 24, 48, 110, 230 V AC/50...60 Hz	
Power consumption	DC voltage 5 W; AC voltage 6,5 VA	
Duty cycle	100 %	
Protection class	IP 65	

Notes: (i) For sub-bases see sheet 4.5.9, (ii) For magnetic coils see sheet 4.6.1.

Dimensions (mm):



Size	A	B	C	D	E	F	G	H	I	J	K	L	M
1	108	40	-	18	36	31	9	28	M5	20	37	49	35
2	133	48	-	24	48	36	9.5	38	M6	20	37	49	35