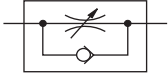


**One-way Flow Control Valve,**  
With flow adjustment in one direction



**Function:**

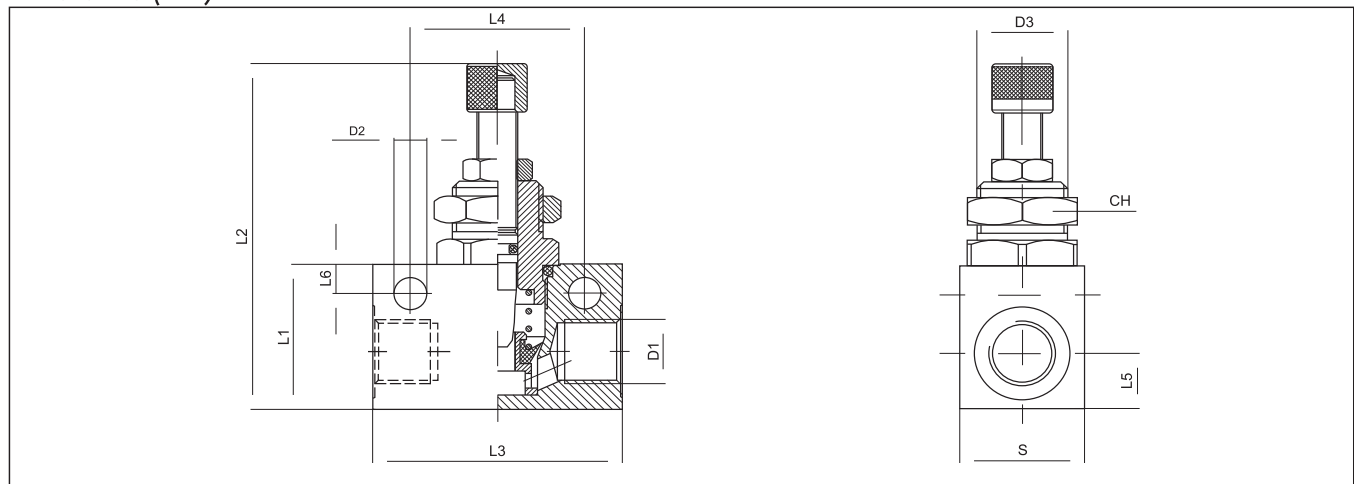
These straight valves are used to regulate the flow of air only in one direction and allowed air to release freely in the opposite direction through check valve.



**Technical Data:**

Type	TCV-M5	TCV-1/8	TCV-1/4	TCV-3/8	TCV-1/2
Art. No.	981402	981407	981416	981425	981433
Connection	M5	1/8"	1/4"	3/8"	1/2"
Flow rate (NI/min)	0...120	0...220	0...900	0...1100	0...2000
Fluid	Compressed air lubricated or non-lubricated				
Pressure range	0...12 bar				
Temperature range	-10...+70 °C				
Mounting	2 through holes				
Body	Aluminum				
Seals	NBR				

**Dimensions (mm):**



Type	D1	D2	D3	L1	L2	L3	L4	L5	S	CH	Weight (g)
TCV-M5	M5	3.2	9x0.75	15	37	25	18	7	12	11	95
TCV-1/8	1/8"	4.5	12x0.75	21	56	34	24	8	16	15	158
TCV-1/4	1/4"	6.5	18x1.5	30	75	50	35	12	25	22	160
TCV-3/8	3/8"	6.5	18x1.5	30	75	58	40	12	25	22	325
TCV-1/2	1/2"	6.5	22x1.5	40	92	65	50	17	30	26	480